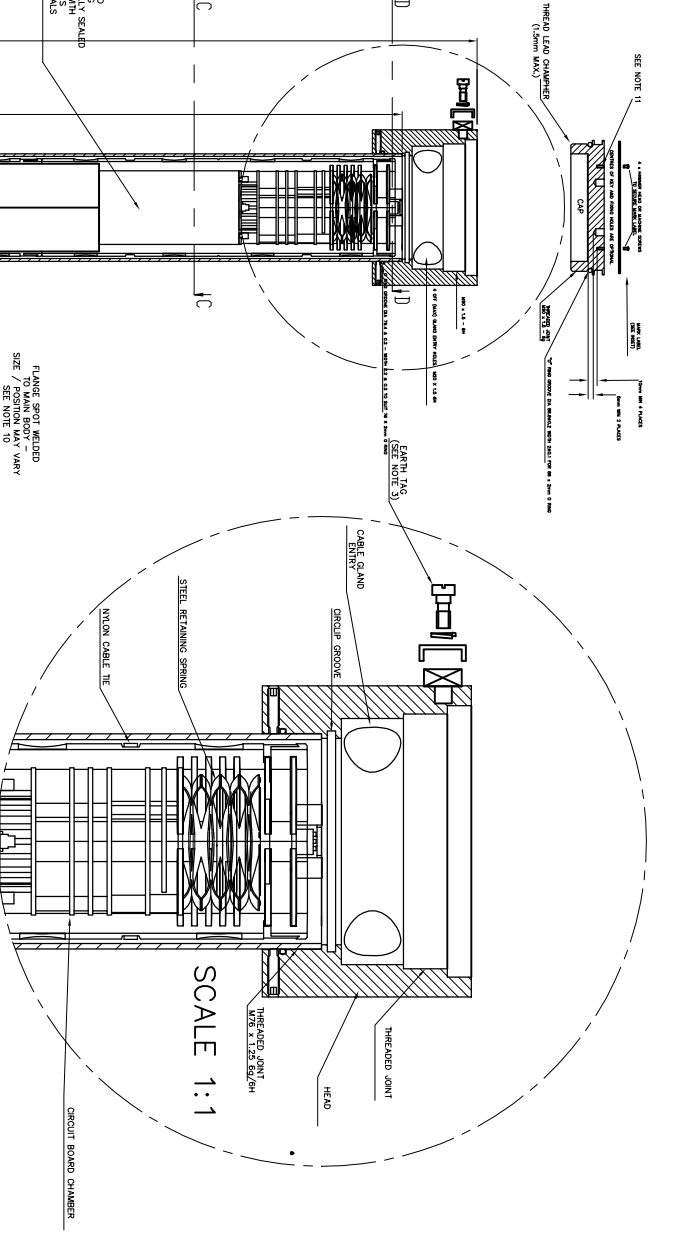
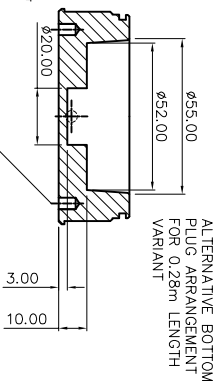
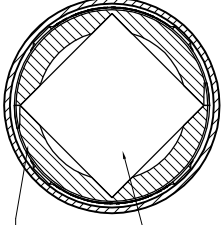
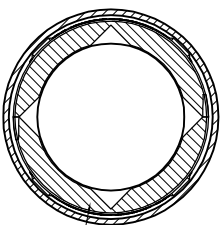
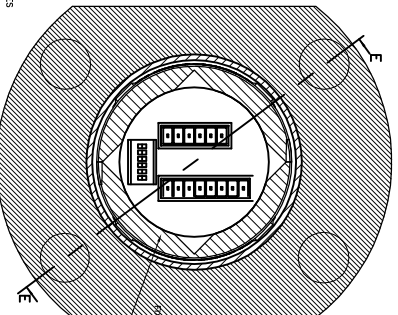
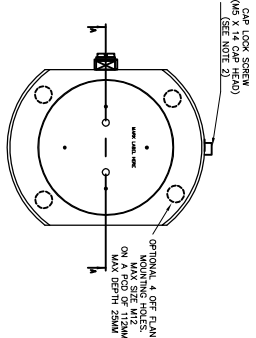


DIMENSIONS IN mm UNLESS OTHERWISE STATED



EX PRODUCT
Schedule Drawing
 No modifications permitted
 without reference to the
 Notified Body

NOTES

- MATERIALS**
 1.1231 CRYSTALINE POLYETHYLENE (PE) FOR THE STAINLESS STEEL TUBE
 2. SPECIAL LENGTHS
 3. FINISHING
 4. LENGTH VARIANTS
- GENERAL COMMENTS**
 1. ALL DIMENSIONS ARE TO DIMENSIONS UNLESS OTHERWISE SPECIFIED.
 2. DIMENSIONS IN PARENTHESES ARE FOR INFORMATION ONLY.
 3. DIMENSIONS IN SQUARE BRACKETS ARE FOR INFORMATION ONLY.
 4. DIMENSIONS IN BRACKETS ARE FOR INFORMATION ONLY.
- LENGTH VARIANTS**

SCREW LENGTH (mm)	INTERNAL PRESSURE TEST (MPa)	EXTERNAL PRESSURE TEST (MPa)
60	0.28	1.3
120	0.28	1.3
180	0.28	1.3
240	0.28	1.3
300	0.28	1.3
360	0.28	1.3
420	0.28	1.3
480	0.28	1.3
540	0.28	1.3
600	0.28	1.3
660	0.28	1.3
720	0.28	1.3
780	0.28	1.3
840	0.28	1.3
900	0.28	1.3
960	0.28	1.3
1020	0.28	1.3
1080	0.28	1.3
1140	0.28	1.3
1200	0.28	1.3
1260	0.28	1.3
1320	0.28	1.3
1380	0.28	1.3
1440	0.28	1.3
1500	0.28	1.3
1560	0.28	1.3
1620	0.28	1.3
1680	0.28	1.3
1740	0.28	1.3
1800	0.28	1.3
1860	0.28	1.3
1920	0.28	1.3
1980	0.28	1.3
2040	0.28	1.3
2100	0.28	1.3
2160	0.28	1.3
2220	0.28	1.3
2280	0.28	1.3
2340	0.28	1.3
2400	0.28	1.3
2460	0.28	1.3
2520	0.28	1.3
2580	0.28	1.3
2640	0.28	1.3
2700	0.28	1.3
2760	0.28	1.3
2820	0.28	1.3
2880	0.28	1.3
2940	0.28	1.3
3000	0.28	1.3

Tracerto
 PO BOX 111, TRACERTO, TRAFALGAR SQUARE, LONDON, W1C 0JF, UK
 TEL: +44 (0)20 7460 1111
 FAX: +44 (0)20 7460 1112
 WWW.TRACERTO.CO.UK

REV	DESCRIPTION	DATE	BY	CHKD BY	APP'D BY
1	Initial release	13/08/13	ES/SH	ES/SH	
2	Added additional sectional view and bottom plug	09/08/13	ES/SH	ES/SH	
3	Title changed, Flange mounting holes added	02/07/13	ES/SH	ES/SH	
4	Note 10 added, Flange specification	20/05/13	ES/SH	ES/SH	
5	Note 11, 12, 13, 14 added, revised dimensions, thread lock	29/11/12	ES/SH	ES/SH	

1251-A-2-N / 1251-A-3-N
 THREADED CONSTRUCTION
 GENERAL ARRANGEMENT
 DATE: 13/08/13
 DRAWING NO: D014133