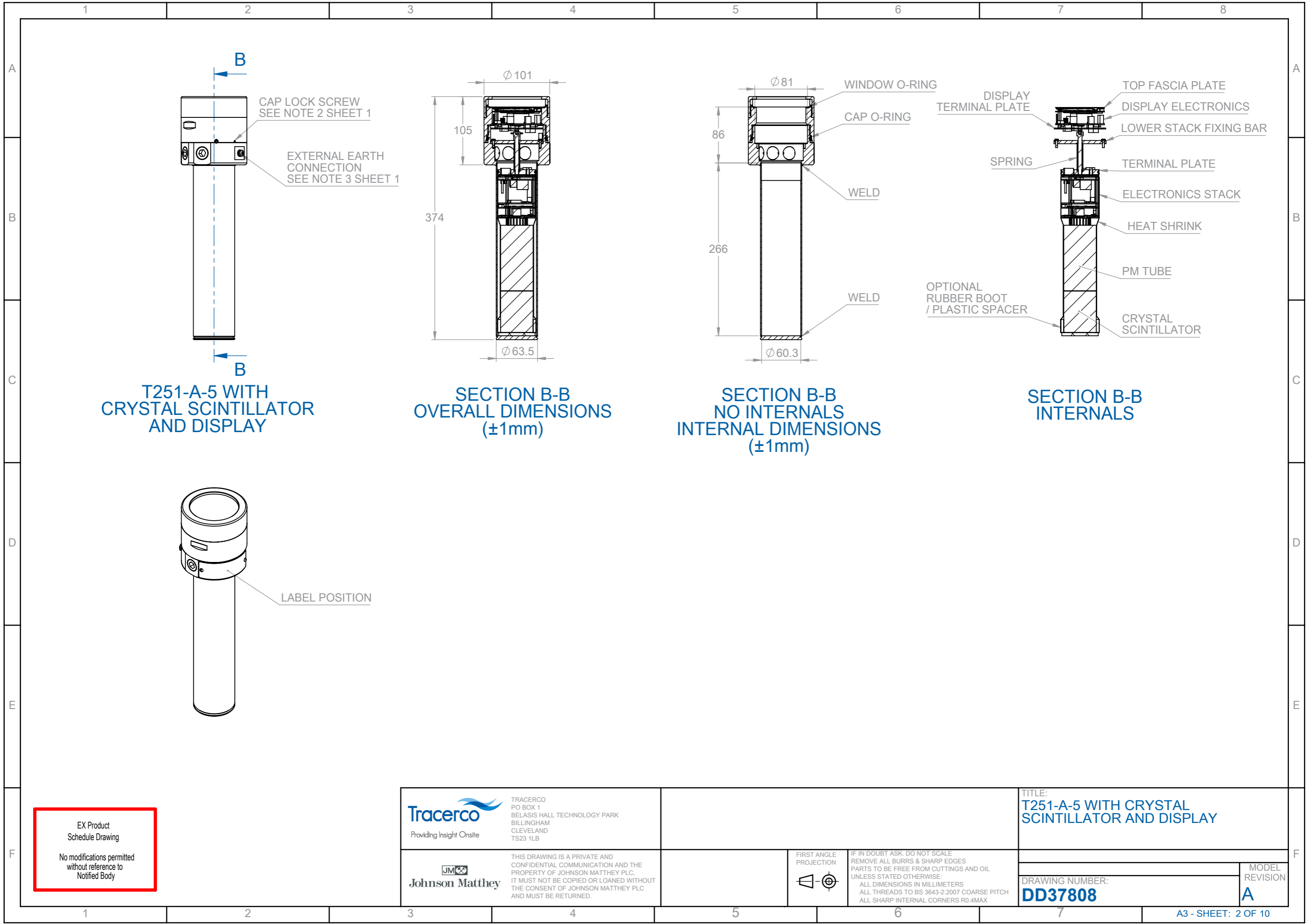


NOTES:

- CASE BODY, HEAD AND CAP ARE 316 OR 316L STAINLESS STEEL.
- THE CAP LOCK SCREW IS A M3 STAINLESS STEEL HEX SOCKET HEAD SCREW TO ISO 965-1 AND ISO965-3.
- EXTERNAL EARTH CONNECTION:- A M5 TAPPED HOLE COMPLETE WITH M5 STAINLESS STEEL SCREW AND ANTI-VIBRATION WASHER.
- INTERNAL EARTH CONNECTION:- A M3 TAPPED HOLE COMPLETE WITH M3 STAINLESS STEEL SCREW AND ANTI-VIBRATION WASHER. THE INTERNAL EARTH CONNECTION TO BE IDENTIFIED BY GREEN PAINT ON THE SCREW HEAD OR SUITABLY DURABLE SELF ADHESIVE LABEL.
- INTERNAL FREE VOLUME IS LESS THAN 1l.
- THREADED FLAME PATH (CASE TO CAP): THREAD TO BE M90 X 1.5mm PITCH. TOL. CLASS 6G/6H OR BETTER TO ISO 965-1 AND ISO965-3. MINIMUM OF 8 THREADS ENGAGED, MINIMUM FLAME PATH LENGTH 12mm.
- CABLE / CONDUIT ENTRIES TO BE EITHER M20 X 1.5 TOL. CLASS 6H OR BETTER TO ISO 965-1 AND ISO965-3, OR 1/2" OR 3/4" NPT PER ANSI / ASME B1.20.1 EXCEPT GAUGE AT L1 + 1/2 TO L1+ 2 WITH 5 FULL THREADS OF ENGAGEMENT. THE DRAWINGS ABOVE SHOW M20 CABLE ENTRIES, FOR IMPERIAL ENTRIES THE FLAT AREA AROUND THE ENTRIES MAY BE OMITTED.
- THE EQUIPMENT CONTAINS NO CELLS OR BATTERIES, A 10F (MAX) CAPACITOR IS PROVIDED FOR MEMORY BACKUP.
- THE EQUIPMENT DISSIPATES LESS THAN 6W IN NORMAL OPERATION. THE EQUIPMENT MAY BE SUPPLIED WITH INTERNAL HEATERS FOR OPERATION AT LOW TEMPERATURES. THIS VERSION DISSIPATES LESS THAN 28W IN NORMAL OPERATION.
- OPTIONAL SELF ADHESIVE LABELS NOT CONTAINING INFORMATION RELEVANT TO CERTIFICATION OF MAXIMUM SIZE 16cm² OR MAXIMUM THICKNESS 0.2mm MAY BE APPLIED TO THE EQUIPMENT PROVIDED THEY DO NOT OVERLAP.
- THE MARK LABEL WILL BE EITHER METAL MARKING PLATE OR DIRECTLY ENGRAVED ON TO THE ENCLOSURE. SEE DD37812 FOR MARKING DETAILS. IN THE CASE OF THE METAL MARKING PLATE SUITABLE HOLES WILL BE DRILLED TO ALLOW FIXING WITH MACHINE SCREWS, HAMMER DRIVE SCREWS OR OTHER MECHANICAL FIXING. SEE SHEET 5.
- MODELS WITH SCINTILLATORS SHORTER THAN 100mm MAY HAVE A MOUNTING PLATE WELDED DIRECTLY TO THE BASE SEE SHEET 10.
- O-RING MATERIAL IS EMI SEALS AND GASKETS EMI301-S707
- EACH AND EVERY STAINLESS STEEL T251-A-5 ENCLOSURE SHALL BE SUBJECT TO THE ROUTINE PRESSURE TEST OF 81bar (1.5 x 53.769bar) FOR A MINIMUM OF 10 SECONDS

EX Product
Schedule Drawing
No modifications permitted
without reference to
Notified Body

<p>TRACERCO PO BOX 1 BELASIS HALL TECHNOLOGY PARK BILLINGHAM CLEVELAND TS23 1LB Providing Insight Onsite</p>	REV.	DESCRIPTION	DRN	CHKD	APVD	DATE	TITLE: T251-A-5 WITH CRYSTAL SCINTILLATOR
	A	ORIGINAL	DC	ES/RH	TH	20-NOV-17	
<p>THIS DRAWING IS A PRIVATE AND CONFIDENTIAL COMMUNICATION AND THE PROPERTY OF JOHNSON MATTHEY PLC, IT MUST NOT BE COPIED OR LOANED WITHOUT THE CONSENT OF JOHNSON MATTHEY PLC AND MUST BE RETURNED.</p>	FIRST ANGLE PROJECTION	IF IN DOUBT ASK. DO NOT SCALE REMOVE ALL BURRS & SHARP EDGES PARTS TO BE FREE FROM CUTTINGS AND OIL UNLESS STATED OTHERWISE: ALL DIMENSIONS IN MILLIMETERS ALL THREADS TO BS 3643-2:2007 COARSE PITCH ALL SHARP INTERNAL CONERS R0.4MAX		DRAWING NUMBER: DD37808		MODEL REVISION A	



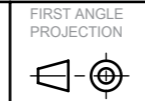
EX Product
Schedule Drawing

No modifications permitted
without reference to
Notified Body

Tracerco
PO BOX 1
BELASIS HALL TECHNOLOGY PARK
BILLINGHAM
CLEVELAND
TS23 1LB

Johnson Matthey

THIS DRAWING IS A PRIVATE AND CONFIDENTIAL COMMUNICATION AND THE PROPERTY OF JOHNSON MATTHEY PLC. IT MUST NOT BE COPIED OR LOANED WITHOUT THE CONSENT OF JOHNSON MATTHEY PLC AND MUST BE RETURNED.

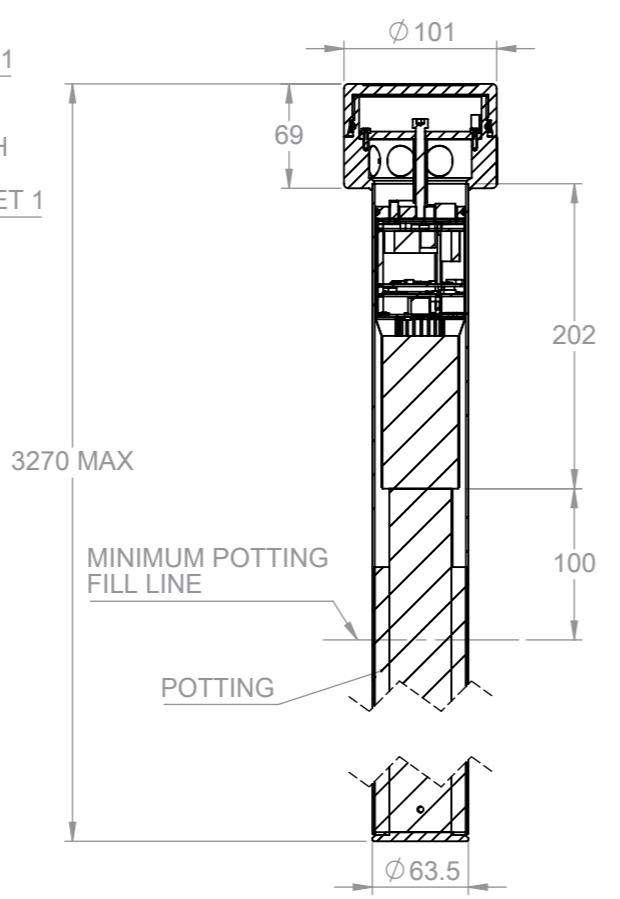
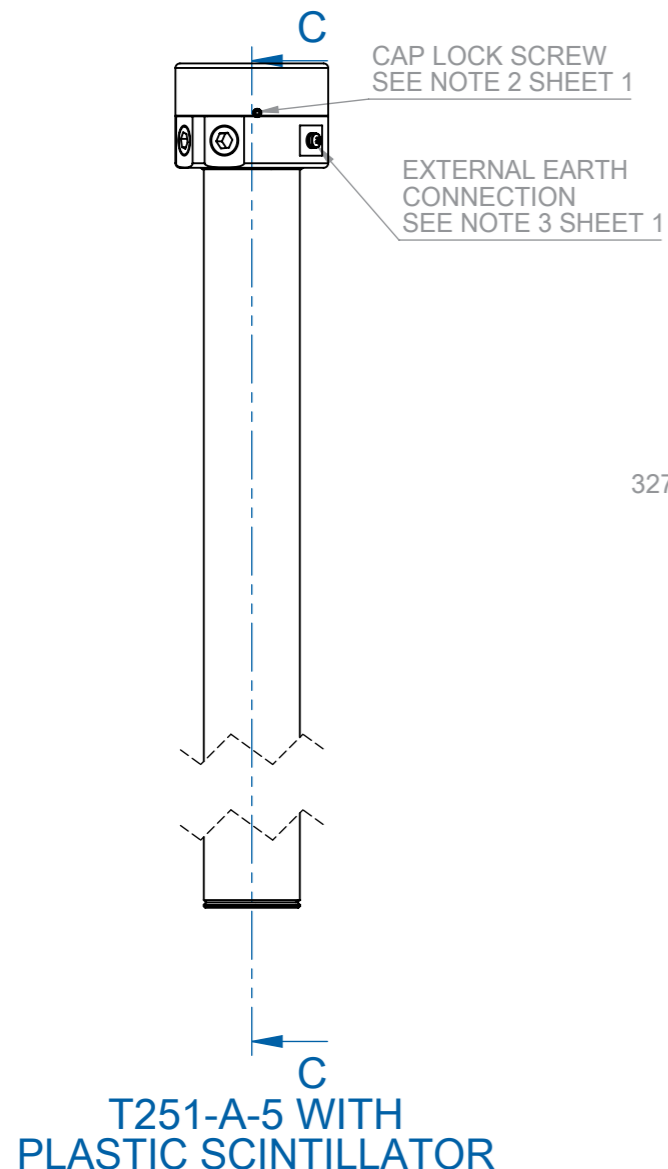


IF IN DOUBT ASK. DO NOT SCALE
REMOVE ALL BURRS & SHARP EDGES
PARTS TO BE FREE FROM CUTTINGS AND OIL
UNLESS STATED OTHERWISE:
ALL DIMENSIONS IN MILLIMETERS
ALL THREADS TO BS 3643-2:2007 COARSE PITCH
ALL SHARP INTERNAL CORNERS R0.4MAX

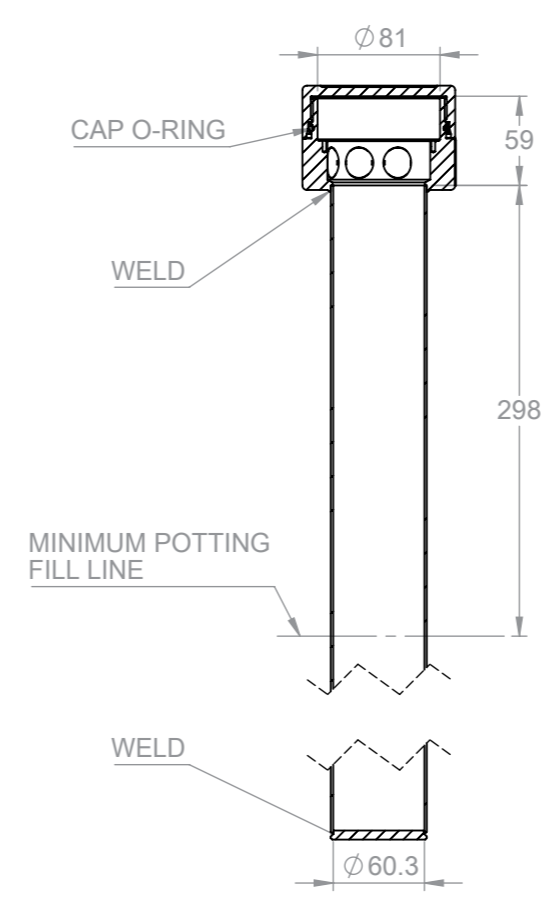
TITLE:
T251-A-5 WITH CRYSTAL SCINTILLATOR AND DISPLAY

DRAWING NUMBER:
DD37808

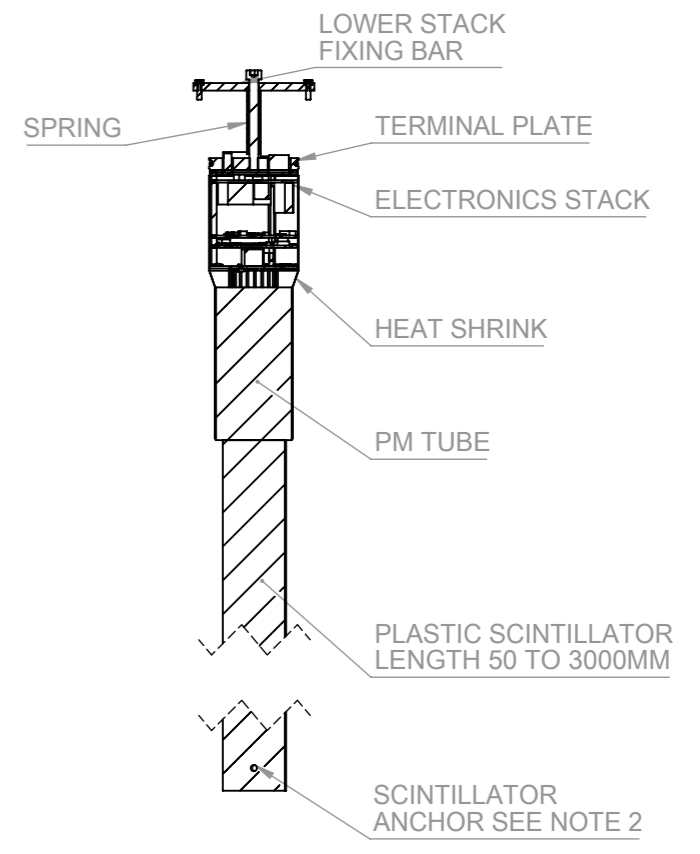
MODEL REVISION
A



**SECTION C-C
OVERALL DIMENSIONS
(±1mm)**



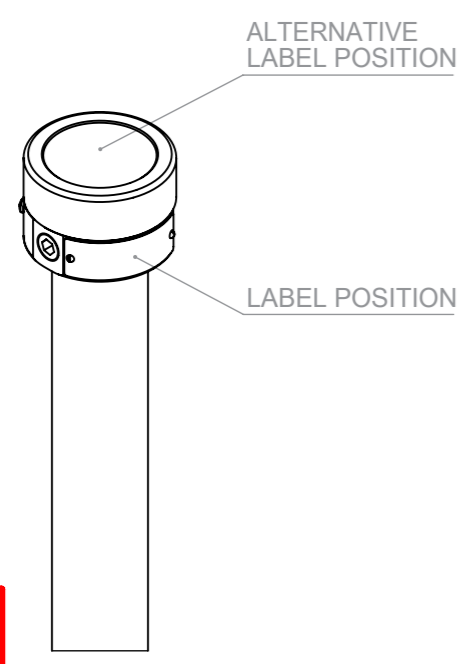
**SECTION C-C
INTERNAL DIMENSIONS
NO INTERNALS
(±1mm)**



**SECTION C-C
INTERNALS**

ADDITIONAL NOTES FOR MODELS WITH PLASTIC SCINTILLATORS:

1. PLASTIC SCINTILLATORS LONGER THAN 100mm ARE ENCAPSULATED IN PLACE USING POLYURETHANE RESIN (PROPOWER PPC124 OR SIMILAR), THE ENCAPSULATION IS USED TO FILL THE VOID BETWEEN THE SCINTILLATOR AND ENCLOSURE AND WILL EXTEND TO WITHIN 100mm OF THE TOP OF THE PLASTIC SCINTILLATOR. IN THIS WAY THE LENGTH OF THE SCINTILLATOR BEYOND 100mm DOES NOT AFFECT THE INTERNAL FREE VOLUME OF THE EQUIPMENT.
2. AN ANCHOR IS PLACED WITHIN 25mm OF THE BOTTOM OF PLASTIC SCINTILLATORS LONGER THAN 100mm. THE ANCHOR MAY BE IN ONE OR MORE PARTS AND WILL CONSISTS OF METAL OR PLASTIC DOWEL(S), BAR(S) OR SCREWS(S) INSERTED INTO THE SCINTILLATOR AND EXTENDING FROM THE SCINTILLATOR INTO THE POTTING ON BOTH SIDES.

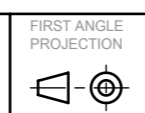


EX Product
Schedule Drawing

No modifications permitted
without reference to
Notified Body

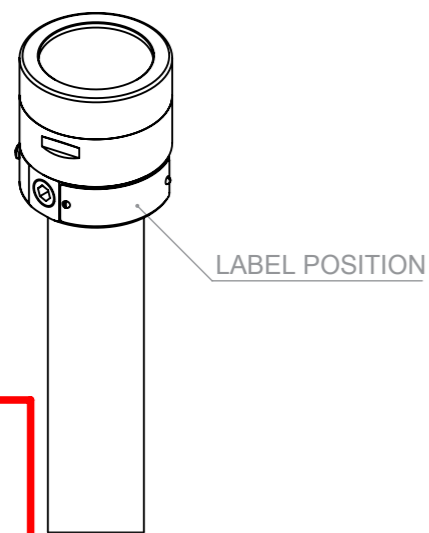
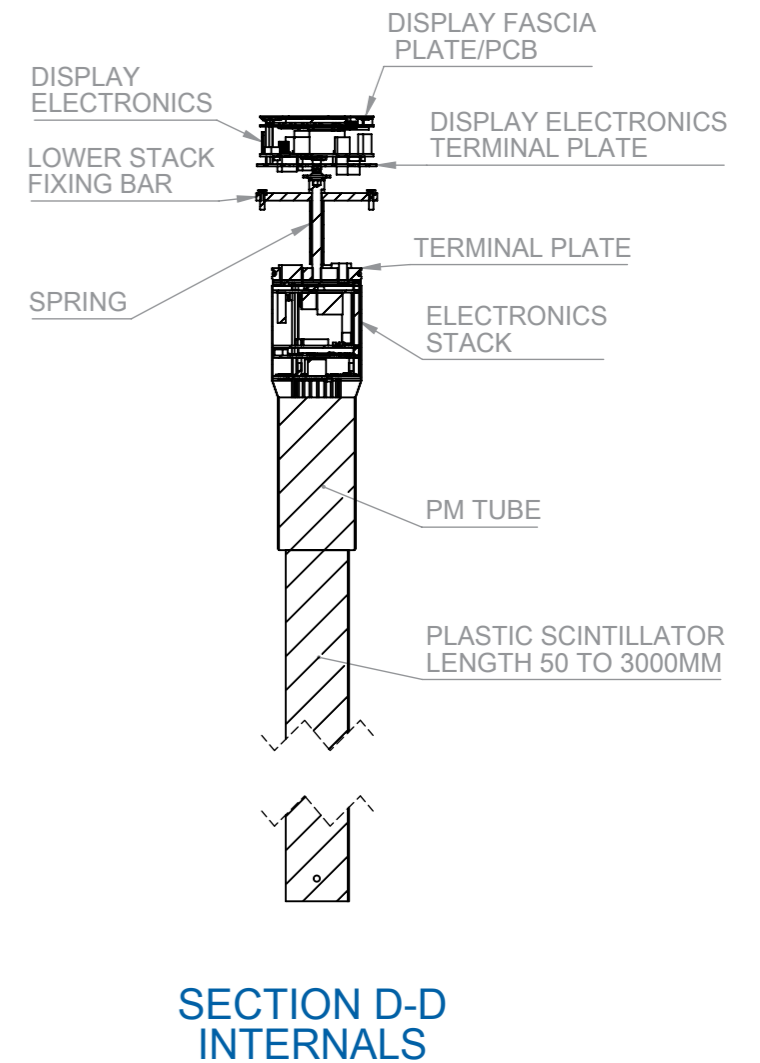
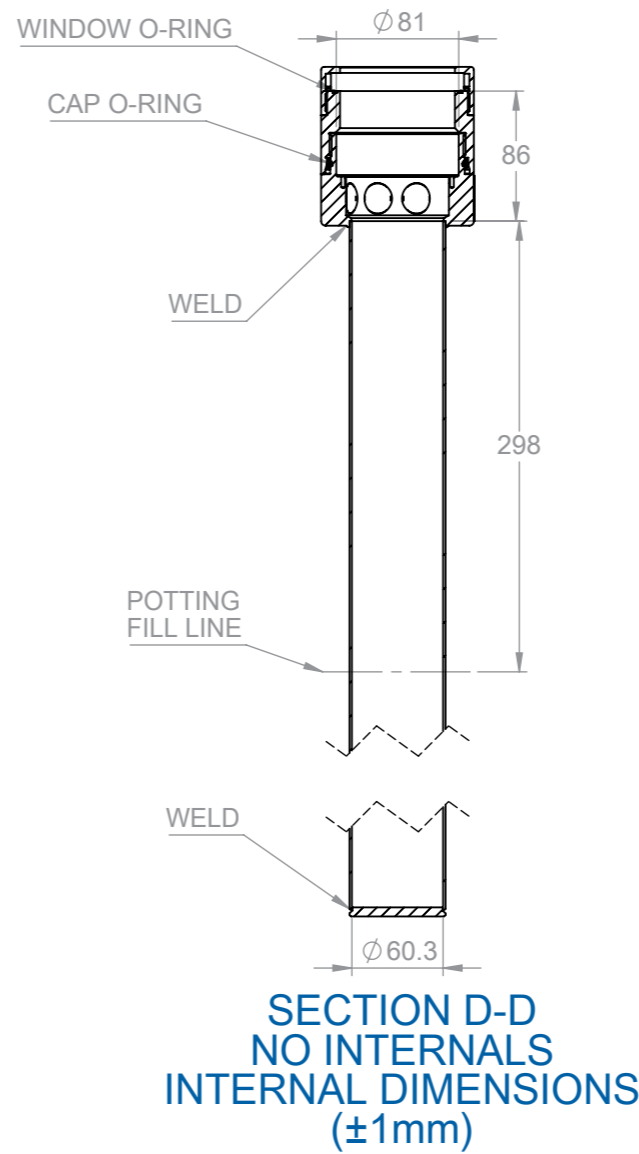
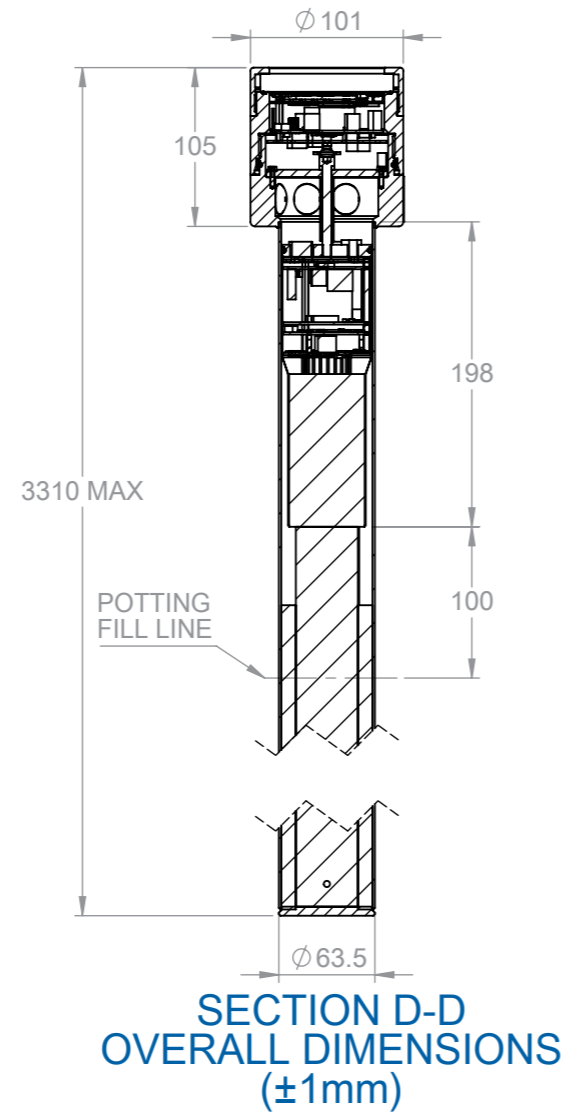
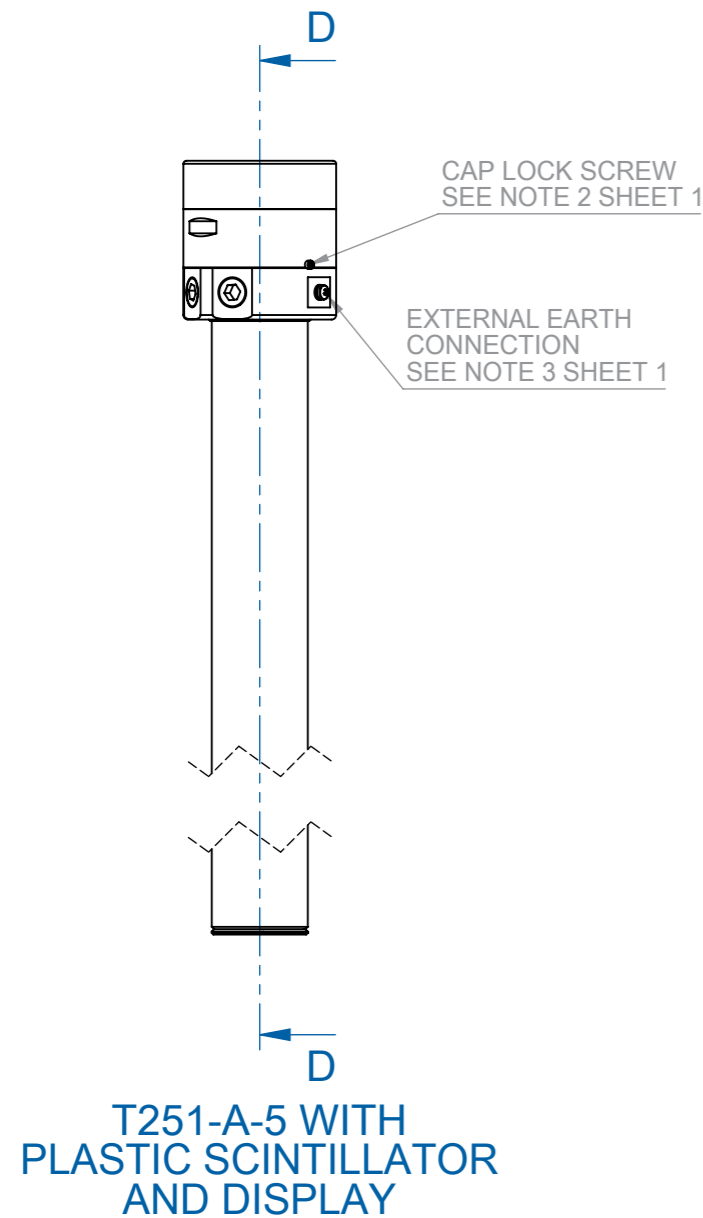
Tracerco
PO BOX 1
BELASIS HALL TECHNOLOGY PARK
BILLINGHAM
CLEVELAND
TS23 1LB
Providing Insight Onsite

Johnson Matthey
THIS DRAWING IS A PRIVATE AND
CONFIDENTIAL COMMUNICATION AND THE
PROPERTY OF JOHNSON MATTHEY PLC,
IT MUST NOT BE COPIED OR LOANED WITHOUT
THE CONSENT OF JOHNSON MATTHEY PLC
AND MUST BE RETURNED.



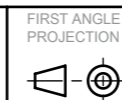
IF IN DOUBT ASK. DO NOT SCALE
REMOVE ALL BURRS & SHARP EDGES
PARTS TO BE FREE FROM CUTTINGS AND OIL
UNLESS STATED OTHERWISE:
ALL DIMENSIONS IN MILLIMETERS
ALL THREADS TO BS 3643-2:2007 COARSE PITCH
ALL SHARP INTERNAL CORNERS R0.4MAX

TITLE: T251-A-5 WITH PLASTIC SCINTILLATOR	
DRAWING NUMBER: DD37808	MODEL REVISION A



Tracerco
PO BOX 1
BELASIS HALL TECHNOLOGY PARK
BILLINGHAM
CLEVELAND
TS23 1LB

Johnson Matthey
THIS DRAWING IS A PRIVATE AND
CONFIDENTIAL COMMUNICATION AND THE
PROPERTY OF JOHNSON MATTHEY PLC,
IT MUST NOT BE COPIED OR LOANED WITHOUT
THE CONSENT OF JOHNSON MATTHEY PLC
AND MUST BE RETURNED.



IF IN DOUBT ASK. DO NOT SCALE
REMOVE ALL BURRS & SHARP EDGES
PARTS TO BE FREE FROM CUTTINGS AND OIL
UNLESS STATED OTHERWISE:
ALL DIMENSIONS IN MILLIMETERS
ALL THREADS TO BS 3643-2:2007 COARSE PITCH
ALL SHARP INTERNAL CORNERS R0.4MAX

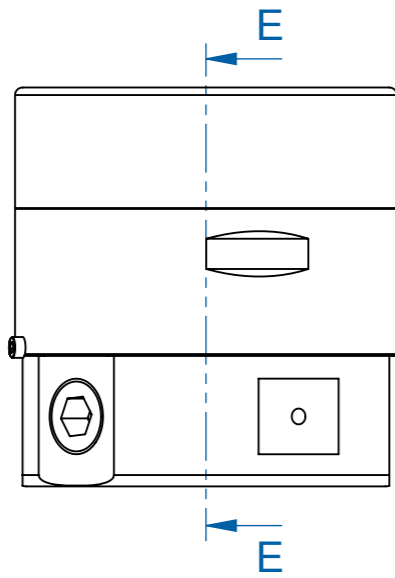
TITLE:
**T251-A-5 WITH PLASTIC
SCINTILLATOR AND DISPLAY**

DRAWING NUMBER:
DD37808

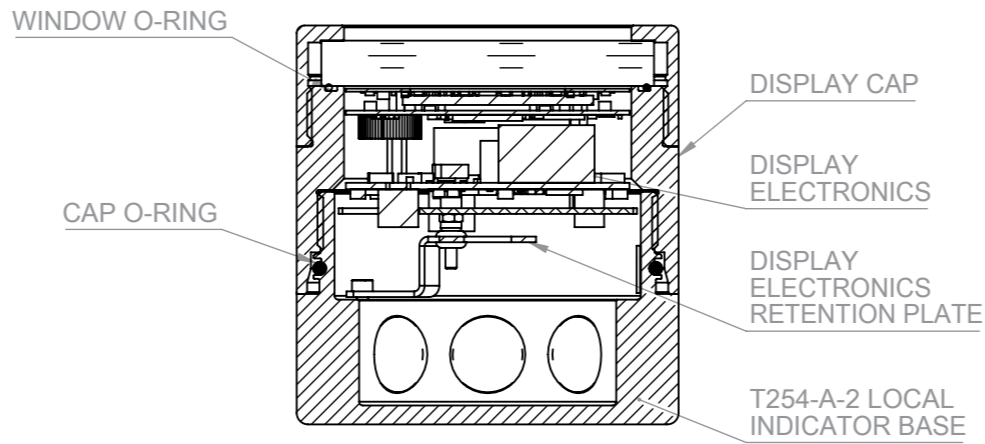
MODEL
REVISION
A

EX Product
Schedule Drawing

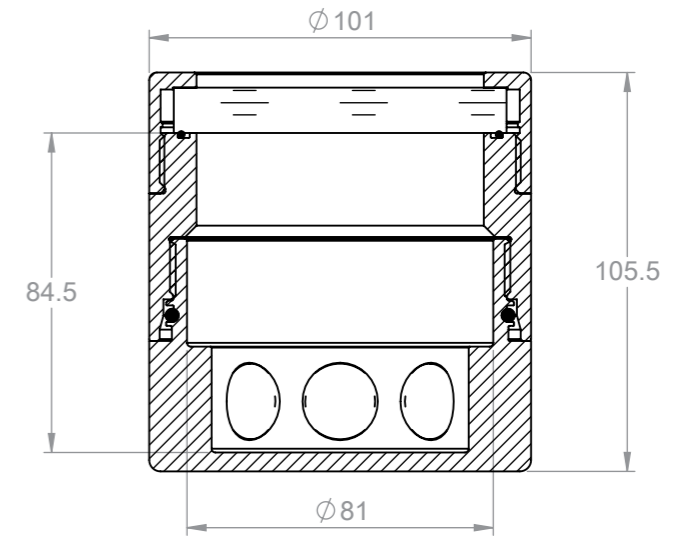
No modifications permitted
without reference to
Notified Body



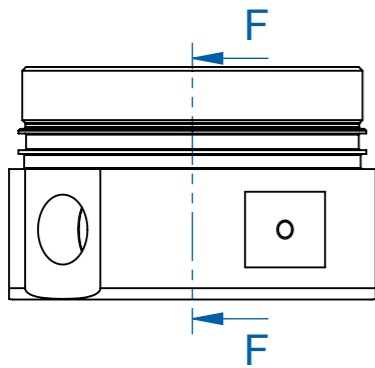
T254-A-2 LOCAL INDICATOR



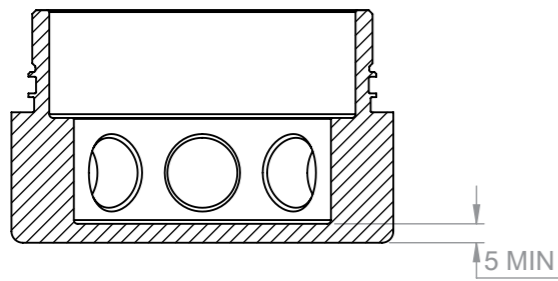
SECTION E-E



SECTION E-E NO INTERNALS DIMENSIONS (±1mm)



T254-A-2 LOCAL INDICATOR BASE



SECTION F-F

LOCAL INDICATOR NOTES:

1. THE T254 LOCAL INDICATOR ENCLOSURE IS FOR THE DISPLAY ELECTRONICS ONLY. THE ENCLOSURE BASE IS BASED ON THE T251-A-5 ENCLOSURE HEAD WITH THE EXCEPTION THAT THERE IS NO PROVISION FOR THE TUBE AND THE SENSOR ELECTRONICS. THE DISPLAY CAP COMPLETES THE ENCLOSURE AND THE DISPLAY ELECTRONICS ARE PLACED INSIDE.
2. UP TO 3 OFF M5 THREADED HOLES MAY BE DRILLED INTO THE BOTTOM OF THE LOCAL INDICATOR ENCLOSURE FOR MOUNTING PURPOSES. THERE IS A MINIMUM OF 3mm OF MATERIAL REMAINING AROUND THE HOLES.
3. THE INTERNAL FREE VOLUME IS LESS THAN 150mL.
4. THE THICKNESS OF THE BASE OF THE LOCAL INDICATOR MAY BE INCREASED TO ALLOW FOR ALTERNATIVE FIXING METHODS.
5. THE LOCAL INDICATOR MAY BE CONSTRUCTED FROM ALUMINIUM, 316 OR 316L STAINLESS STEEL.
6. ALUMINIUM ENCLOSURES MAY BE EPOXY COATED OR ANODISED. EPOXY COATING WILL NOT BE APPLIED TO FLAME PATHS OR PROTECTIVE EARTH POINTS. ANODISING WILL BE EXCLUDED FROM PROTECTIVE EARTHING POINTS. NON-CONDUCTIVE LAYERS WILL BE LESS THAN 0.2mm THICK.
7. EACH AND EVERY STAINLESS STEEL OR ALUMINIUM T254-A-2 ENCLOSURE SHALL BE SUBJECT TO THE ROUTINE PRESSURE TEST OF 53.3bar (1.5 x 35.504bar) FOR A MINIMUM OF 10 SECONDS

EX Product
Schedule Drawing

No modifications permitted
without reference to
Notified Body

Tracerco
Providing Insight Onsite

TRACERCO
PO BOX 1
BELASIS HALL TECHNOLOGY PARK
BILLINGHAM
CLEVELAND
TS23 1LB

Johnson Matthey

THIS DRAWING IS A PRIVATE AND CONFIDENTIAL COMMUNICATION AND THE PROPERTY OF JOHNSON MATTHEY PLC. IT MUST NOT BE COPIED OR LOANED WITHOUT THE CONSENT OF JOHNSON MATTHEY PLC AND MUST BE RETURNED.

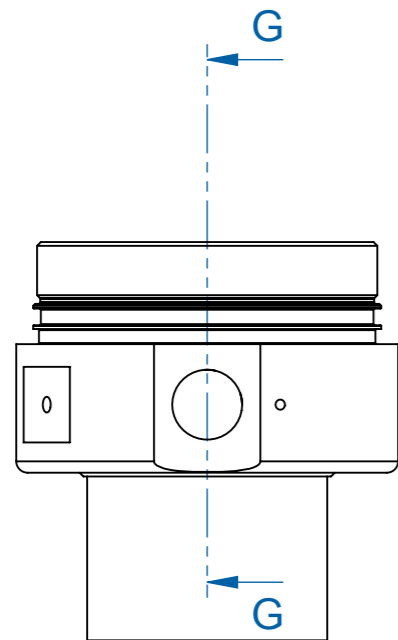


IF IN DOUBT ASK. DO NOT SCALE
REMOVE ALL BURRS & SHARP EDGES
PARTS TO BE FREE FROM CUTTINGS AND OIL
UNLESS STATED OTHERWISE:
ALL DIMENSIONS IN MILLIMETERS
ALL THREADS TO BS 3643-2:2007 COARSE PITCH
ALL SHARP INTERNAL CORNERS R0.4MAX

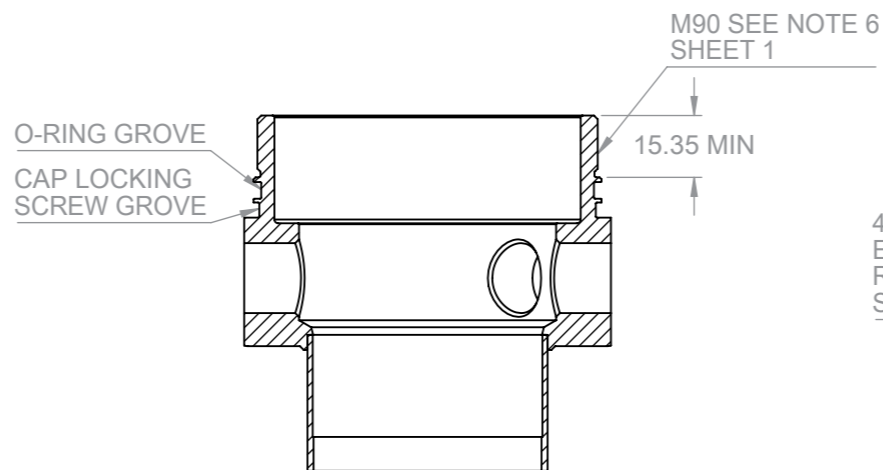
TITLE:
T254-A-2 LOCAL INDICATOR

DRAWING NUMBER:
DD37808

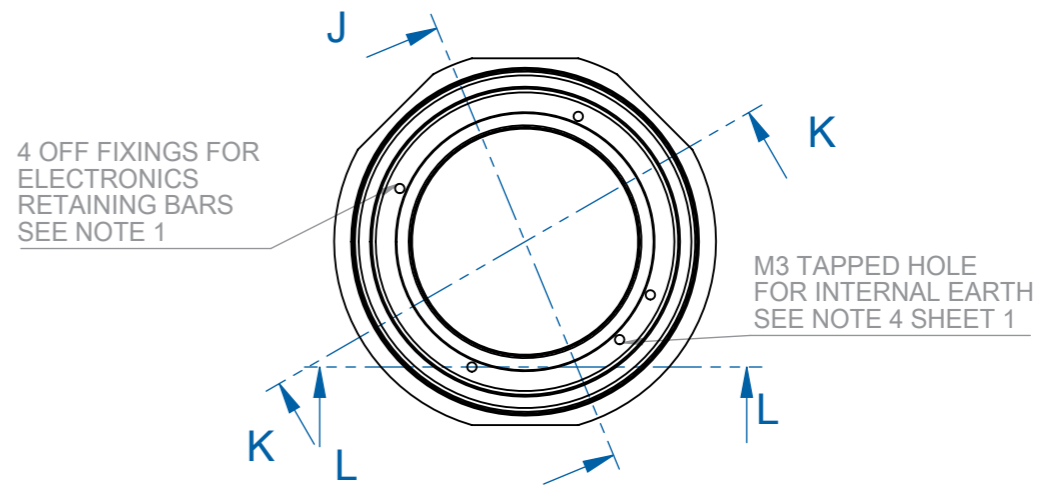
MODEL REVISION
A



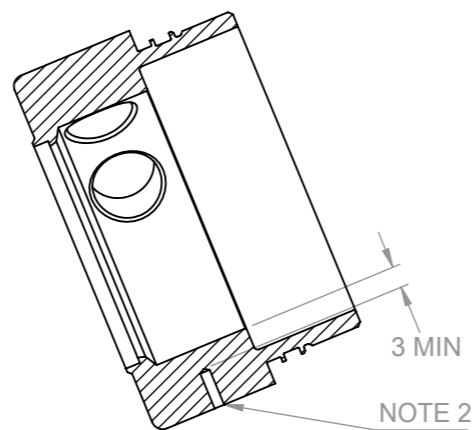
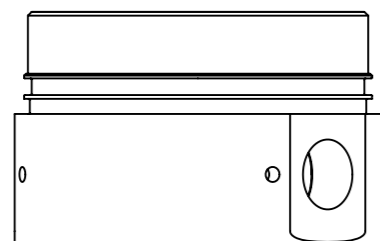
ENCLOSURE HEAD



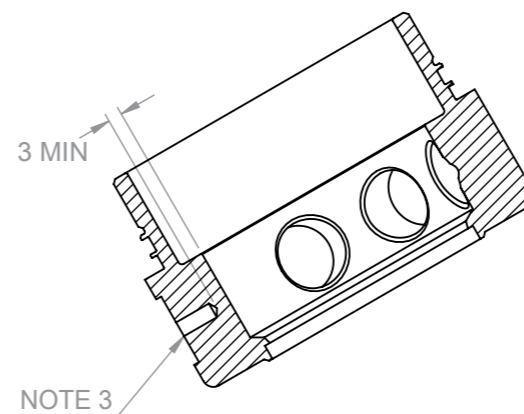
SECTION G-G
ENCLOSURE HEAD
THREAD DETAILS



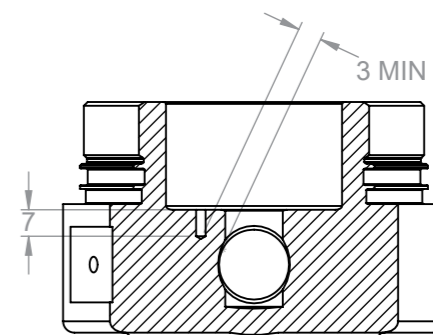
ENCLOSURE HEAD
INTERNAL EARTH DETAILS



SECTION J-J
MARKING PLATE FIXING HOLES



SECTION K-K
EXTERNAL EARTH



SECTION L - L
INTERNAL THREADED
BLIND HOLES

ENCLOSURE HEAD NOTES:

- UP TO 4 HOLES (MINIMUM OF 2) MAY BE DRILLED AS SHOWN TO ALLOW THE RETAINING BARS TO BE FASTENED INTO THE EQUIPMENT. HOLES WILL BE 7MM DEEP AND THREADED M3X 0.5 (ISO 965-1 AND ISO965-3) TO A DEPTH OF 6.5mm. THE UPPER STACK RETENTION BAR IS 2mm THICK, THE LOWER STACK RETENTION BAR IS 5mm THICK. THE RETAINING SCREWS ARE 8mm LONG (THREADED PART).
- 2 HOLES MAY BE DRILLED AS SHOWN TO ALLOW THE METAL MARKING PLATE TO BE FASTENED TO THE EQUIPMENT. THE HOLES WILL BE A MAXIMUM OF 4mm DIAMETER. THERE WILL BE A MINIMUM OF 3mm MATERIAL REMAINING AROUND THE HOLE. THE MARK LABEL MAY BE FASTENED WITH HAMMER DRIVE SCREWS OR MACHINE SCREWS. IN THE CASE OF THE LATTER THE HOLE WILL BE AT LEAST 8mm DEEP WITH A THREADED LENGTH OF NO LESS THAN 7mm THE SCREW WILL HAVE A MAXIMUM THREADED LENGTH OF 6mm.
- THE EXTERNAL EARTH IS DRILLED TO A MINIMUM DEPTH OF 10mm AND THREADED M5X 0.8 (ISO 965-1 AND ISO965-3) TO A DEPTH OF NO LESS THAN 9mm. THE EXTERNAL EARTH FIXING SCREW WILL HAVE A MAXIMUM THREADED LENGTH OF 8mm.

Tracerco
PO BOX 1
BELASIS HALL TECHNOLOGY PARK
BILLINGHAM
CLEVELAND
TS23 1LB
Providing Insight Onsite

Johnson Matthey
THIS DRAWING IS A PRIVATE AND CONFIDENTIAL COMMUNICATION AND THE PROPERTY OF JOHNSON MATTHEY PLC. IT MUST NOT BE COPIED OR LOANED WITHOUT THE CONSENT OF JOHNSON MATTHEY PLC AND MUST BE RETURNED.

FIRST ANGLE PROJECTION

IF IN DOUBT ASK. DO NOT SCALE
REMOVE ALL BURRS & SHARP EDGES
PARTS TO BE FREE FROM CUTTINGS AND OIL
UNLESS STATED OTHERWISE:
ALL DIMENSIONS IN MILLIMETERS
ALL THREADS TO BS 3643-2:2007 COARSE PITCH
ALL SHARP INTERNAL CORNERS R0.4MAX

TITLE:
T251-A-5 ENCLOSURE HEAD DETAILS

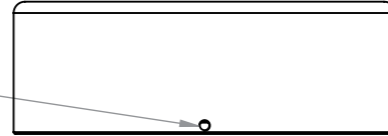
DRAWING NUMBER:
DD37808

MODEL REVISION
A

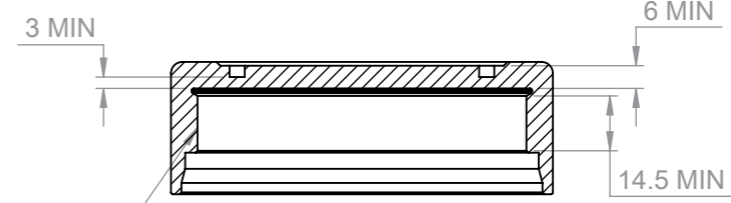
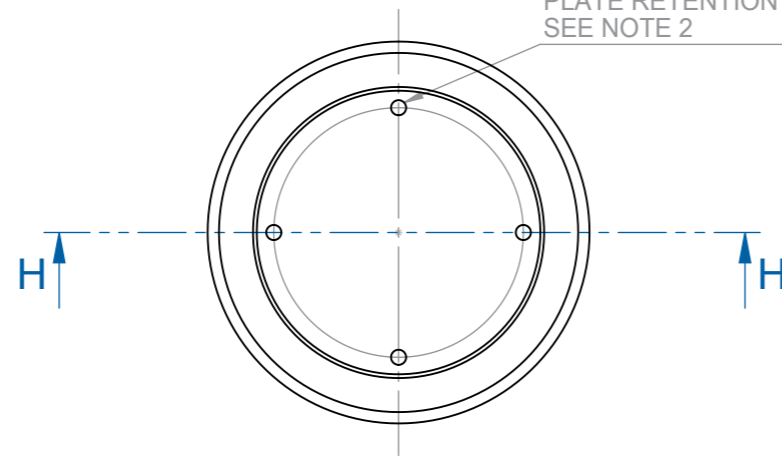
EX Product
Schedule Drawing

No modifications permitted
without reference to
Notified Body

M3 CAP LOCKING
SCREW HOLE
SEE NOTE 2 SHEET 1



OPTIONAL MARKING
PLATE RETENTION HOLES
SEE NOTE 2



M90 x 1.5
SEE NOTE 6 SHEET 1

SECTION H-H

CAP NOTES:

1. MATERIAL: ALUMINIUM, 316 OR 316L STAINLESS STEEL,
2. UP TO 4 HOLES MAY BE DRILLED INTO THE TOP OF THE CAP FOR THE RETENTION OF THE OPTIONAL METAL MARKING PLATE. THE HOLES WILL HAVE A MAXIMUM DIAMETER OF 4mm, THERE WILL BE A MINIMUM OF 3mm OF MATERIAL REMAINING AROUND THE HOLES. IF PRESENT THE HOLES WILL BE TAPPED M3X0.5 TO A DEPTH OF 2.5mm THE MARK LABEL WILL BE 1mm THICK AND THE THREADED LENGTH OF THE RETAINING SCREW WILL BE 3mm.

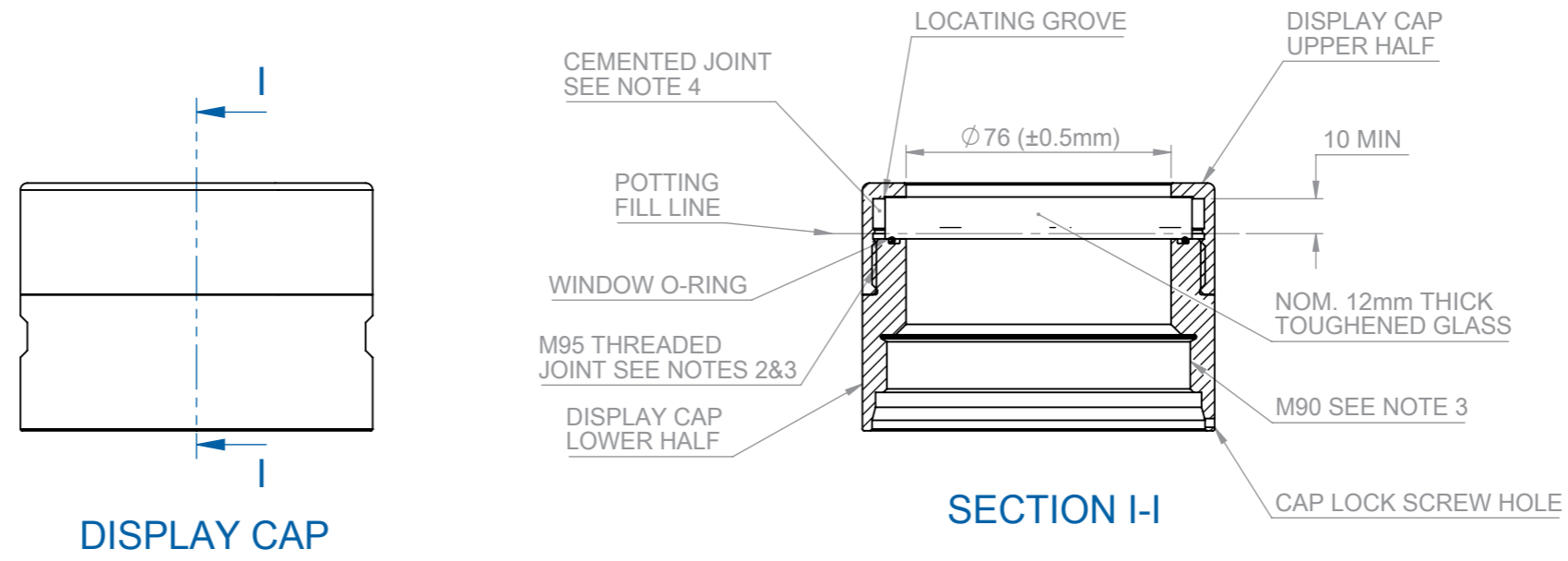
<p>TRACERCO PO BOX 1 BELASIS HALL TECHNOLOGY PARK BILLINGHAM CLEVELAND TS23 1LB</p>	<p>THIS DRAWING IS A PRIVATE AND CONFIDENTIAL COMMUNICATION AND THE PROPERTY OF JOHNSON MATTHEY PLC. IT MUST NOT BE COPIED OR LOANED WITHOUT THE CONSENT OF JOHNSON MATTHEY PLC AND MUST BE RETURNED.</p>
	<p>FIRST ANGLE PROJECTION</p>

<p>TITLE: T251-A-5 CAP</p>	<p>IF IN DOUBT ASK. DO NOT SCALE REMOVE ALL BURRS & SHARP EDGES PARTS TO BE FREE FROM CUTTINGS AND OIL UNLESS STATED OTHERWISE: ALL DIMENSIONS IN MILLIMETERS ALL THREADS TO BS 3643-2:2007 COARSE PITCH ALL SHARP INTERNAL CORNERS R0.4MAX</p>
---------------------------------------	---

<p>MATERIAL: WEIGHT: DRAWING NUMBER: DD37808</p>	<p>MODEL REVISION A</p>
---	------------------------------------

EX Product
Schedule Drawing

No modifications permitted
without reference to
Notified Body



DISPLAY CAP NOTES:

1. MATERIAL: ALUMINIUM (ONLY FOR USE WITH LOCAL INDICATOR), 316 OR 316L STAINLESS STEEL,
2. THE DISPLAY CAP IS MANUFACTURED IN TWO PARTS THAT SANDWICH A GLASS WINDOW. THE TWO HALVES ARE PERMANENTLY FASTENED TOGETHER USING ONE OF THE FOLLOWING AS A THREAD LOCKING COMPOUND:-
LOCTITE 271 OR ROB NOR RESIN PX439XS.
3. THREADED FLAME PATH (LOWER HALF TO UPPER HALF OF THE CAP) THREAD TO BE M95 X 1.5mm PITCH. TOL. CLASS 6G/6H OR BETTER TO ISO 965-1 AND ISO965-3. MINIMUM OF 8 THREADS ENGAGED, MINIMUM FLAME PATH LENGTH 12mm.
4. THE WINDOW IS CEMENTED IN PLACE USING EITHER RAYTECH MAGICGEL OR ROB NOR RESIN PX439XS. THE CEMENT IS AT LEAST 10mm DEEP.
5. THREADED FLAME PATH (CASE TO CAP): THREAD TO BE M90 X 1.5mm PITCH. TOL. CLASS 6G/6H OR BETTER TO ISO 965-1 AND ISO965-3. MINIMUM OF 8 THREADS ENGAGED, MINIMUM FLAME PATH LENGTH 12mm.
6. WINDOW SPECIFICATION 88mm DIA, 12mm THICK PLANIBEL CLEARLITE TOUGHENED FLOAT SODA-LIME GLASS.

WINDOW CEMENT AND CAP ASSEMBLY METHOD:

1. ALL PARTS ARE CLEANED USING ISOPROPYL ALCOHOL OR SIMILAR.
2. FOR SILICON COMPOUNDS MOMENTIVE SS4120 OR SIMILAR PRIMER IS APPLIED TO THE APPROPRIATE AREAS AND ALLOWED TO DRY IN ACCORDANCE WITH THE MANUFACTURERS INSTRUCTIONS.
3. THE UPPER HALF IS PLACED FACE DOWN ON A FLAT SURFACE, THE WINDOW IS THEN PLACED INSIDE THE LOCATING GROVE.
4. THE TWO PARTS OF THE POTTING COMPOUND ARE THEN MIXED IN ACCORDANCE WITH THE MANUFACTURERS INSTRUCTIONS.
5. THE POTTING IS THEN Poured INTO THE SPACE BETWEEN THE WINDOW AND UPPER HALF UNTIL IT REACHES THE MINIMUM FILL MARK (10MM).
6. THE POTTING IS THEN LEFT TO CURE A ROOM TEMPERATURE OR 40°C (ROBNOR RESINS PX439XS) FOR AT LEAST 24HRS.
7. THREAD LOCKING COMPOUND IS APPLIED TO THE MALE PART OF THE THREAD ON THE LOWER HALF OF THE DISPLAY CAP.
8. THE TWO HALVES OF THE CAP ARE THEN SCREWED TOGETHER HAND TIGHT AND LEFT TO CURE AS PER THE MANUFACTURERS INSTRUCTIONS.

EX Product
Schedule Drawing

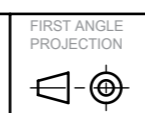
No modifications permitted
without reference to
Notified Body

Tracerco
Providing Insight Onsite

TRACERCO
PO BOX 1
BELASIS HALL TECHNOLOGY PARK
BILLINGHAM
CLEVELAND
TS23 1LB

Johnson Matthey

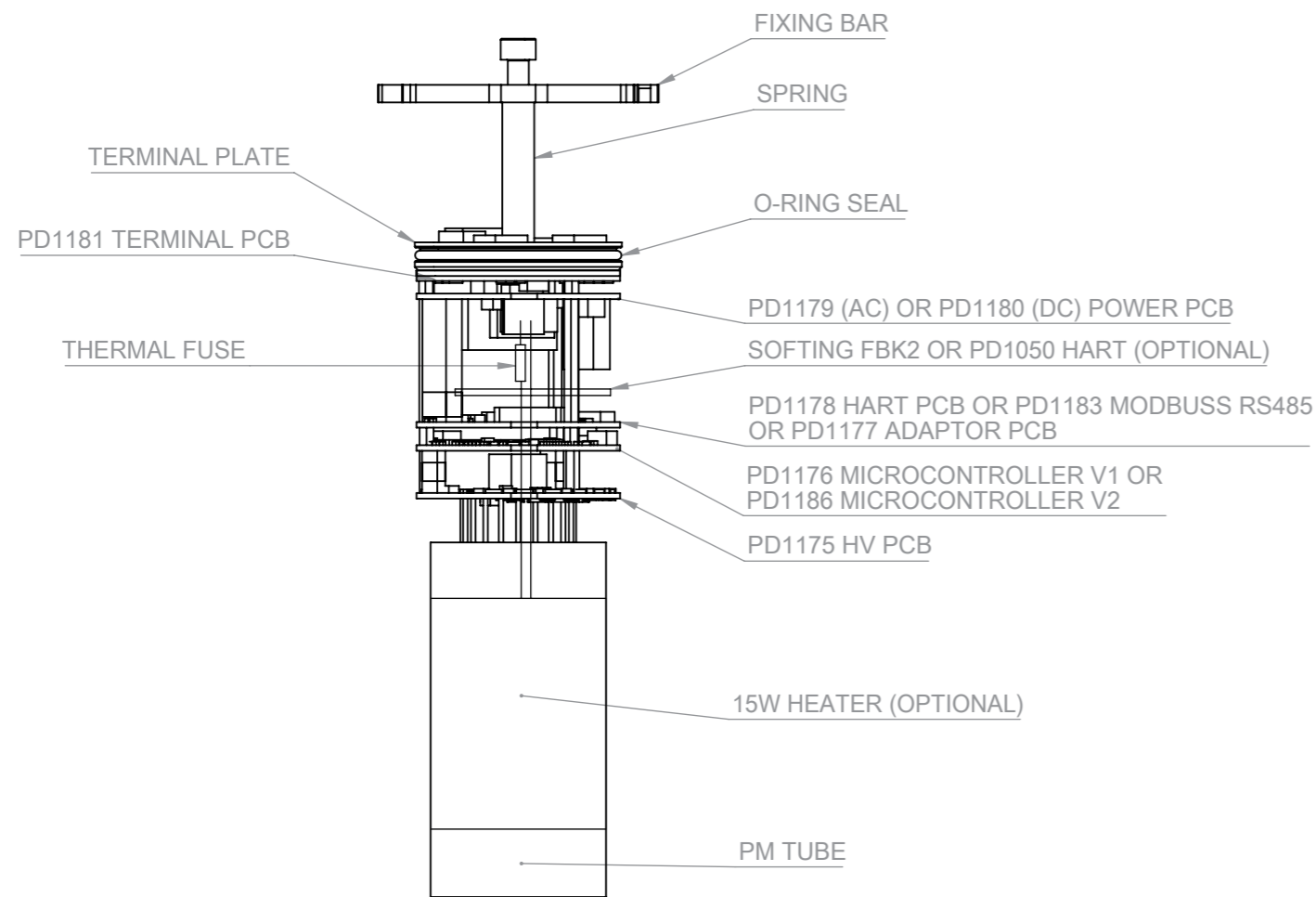
THIS DRAWING IS A PRIVATE AND CONFIDENTIAL COMMUNICATION AND THE PROPERTY OF JOHNSON MATTHEY PLC. IT MUST NOT BE COPIED OR LOANED WITHOUT THE CONSENT OF JOHNSON MATTHEY PLC AND MUST BE RETURNED.



FIRST ANGLE PROJECTION

IF IN DOUBT ASK. DO NOT SCALE
REMOVE ALL BURRS & SHARP EDGES
PARTS TO BE FREE FROM CUTTINGS AND OIL
UNLESS STATED OTHERWISE:
ALL DIMENSIONS IN MILLIMETERS
ALL THREADS TO BS 3643-2:2007 COARSE PITCH
ALL SHARP INTERNAL CORNERS R0.4MAX

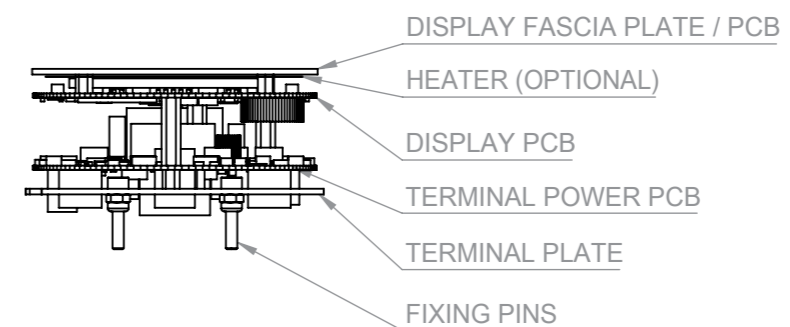
TITLE: T251-A-5 DISPLAY CAP	
DRAWING NUMBER: DD37808	MODEL REVISION A



ELECTRONICS STACK

NOTES:

1. PCBs TO BE 58mm ± 0.5mm DIAMETER FR-4.
2. ELECTRONICS STACK USES EITHER 5 OR 6 PCBs DEPENDING ON THE COMMUNICATIONS METHOD UTILISED. FOR HART COMMUNICATIONS THE PD1178 IS USED, FOR MODBUS THE PD1183 IS USED OR FOR PROFIBUS OR FOUNDATION FIELD BUS THE SOFTING FBK-2 IS USED ALONG WITH THE ADAPTOR BOARD PD1177 OTHER COMBINATIONS MAY ALSO BE USED.
3. AN OPTIONAL HEATER MAY BE WRAPPED AROUND THE PM TUBE. THE HEATER IS RATED AT 15W MAX. FOR AC MODELS THE HEATER IS POWERED DIRECTLY FROM THE AC SUPPLY. FOR DC MODELS THE HEATER IS POWERED DIRECTLY FROM THE DC SUPPLY. THE HEATER IS SOFTWARE CONTROLLED USING THE MICROPROCESSOR AND A SOLID STATE RELAY.
4. MODELS WITH HEATERS WILL HAVE A NON-RESETTABLE THERMAL FUSE FITTED ON THE HEATER FLYING LEADS LOCATED AS SHOWN ABOVE. THE THERMAL FUSE WILL HAVE A MAXIMUM TRIP TEMP OF 77°C.
5. THE ELECTRONICS STACK USES 750mW MAX (EXCLUDING THE HEATER).



DISPLAY ELECTRONICS

NOTES:

1. PCBs TO BE 76mm ± 0.5mm DIAMETER FR-4.
2. THE DISPLAY ELECTRONICS USE 6W MAXIMUM THE OPTIONAL HEATER IS RATED AT 2W.

EX Product
Schedule Drawing

No modifications permitted
without reference to
Notified Body

Tracerco
PO BOX 1
BELASIS HALL TECHNOLOGY PARK
BILLINGHAM
CLEVELAND
TS23 1LB
Providing Insight Onsite

Johnson Matthey
THIS DRAWING IS A PRIVATE AND
CONFIDENTIAL COMMUNICATION AND THE
PROPERTY OF JOHNSON MATTHEY PLC,
IT MUST NOT BE COPIED OR LOANED WITHOUT
THE CONSENT OF JOHNSON MATTHEY PLC
AND MUST BE RETURNED.

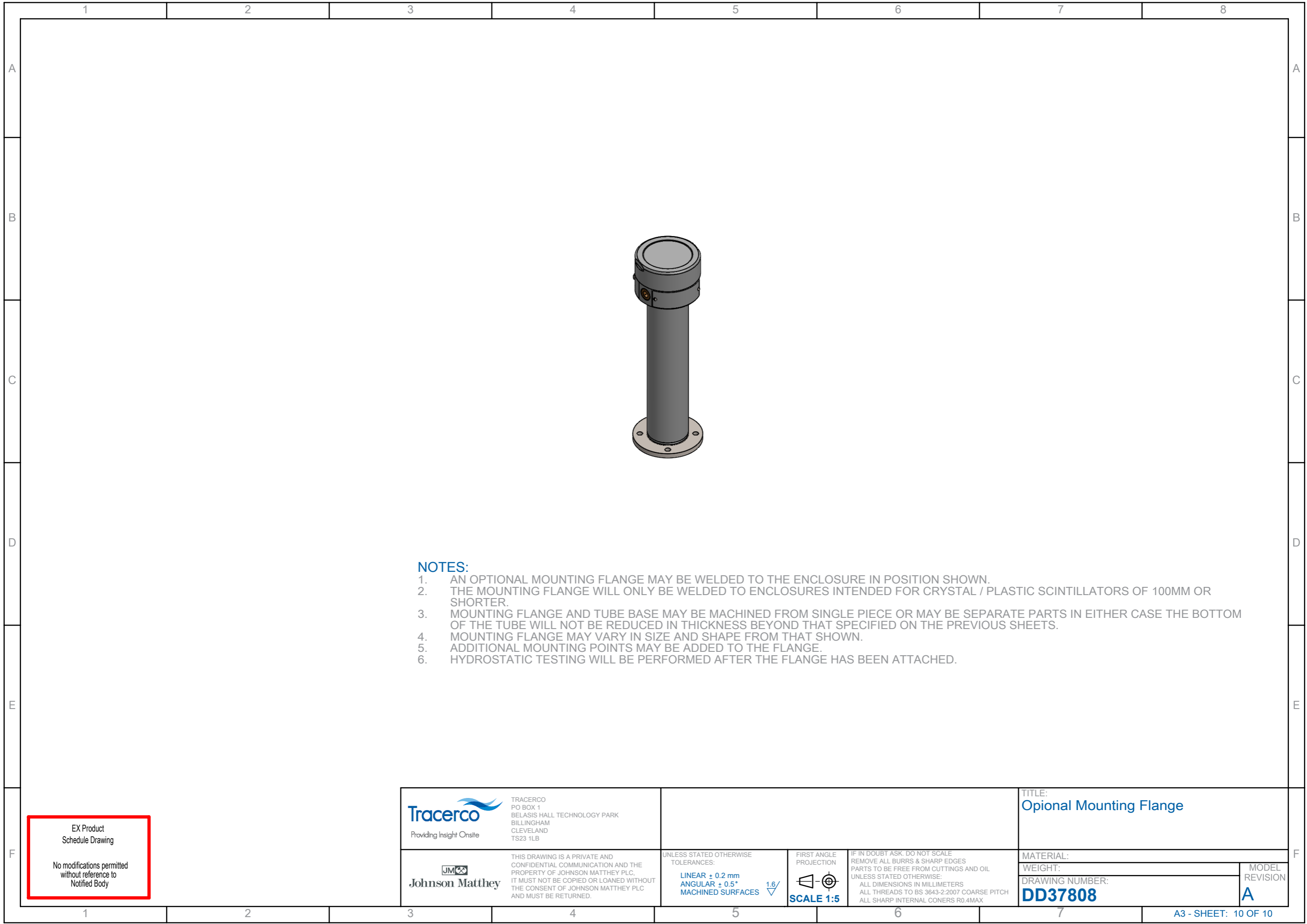


IF IN DOUBT ASK. DO NOT SCALE
REMOVE ALL BURRS & SHARP EDGES
PARTS TO BE FREE FROM CUTTINGS AND OIL
UNLESS STATED OTHERWISE:
ALL DIMENSIONS IN MILLIMETERS
ALL THREADS TO BS 3643-2:2007 COARSE PITCH
ALL SHARP INTERNAL CORNERS R0.4MAX

TITLE:
T251-A-5 ELECTRONICS STACKS




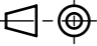
DRAWING NUMBER:
DD37808

MODEL
REVISION
A



NOTES:

1. AN OPTIONAL MOUNTING FLANGE MAY BE WELDED TO THE ENCLOSURE IN POSITION SHOWN.
2. THE MOUNTING FLANGE WILL ONLY BE WELDED TO ENCLOSURES INTENDED FOR CRYSTAL / PLASTIC SCINTILLATORS OF 100MM OR SHORTER.
3. MOUNTING FLANGE AND TUBE BASE MAY BE MACHINED FROM SINGLE PIECE OR MAY BE SEPARATE PARTS IN EITHER CASE THE BOTTOM OF THE TUBE WILL NOT BE REDUCED IN THICKNESS BEYOND THAT SPECIFIED ON THE PREVIOUS SHEETS.
4. MOUNTING FLANGE MAY VARY IN SIZE AND SHAPE FROM THAT SHOWN.
5. ADDITIONAL MOUNTING POINTS MAY BE ADDED TO THE FLANGE.
6. HYDROSTATIC TESTING WILL BE PERFORMED AFTER THE FLANGE HAS BEEN ATTACHED.

 <p>TRACERCO PO BOX 1 BELASIS HALL TECHNOLOGY PARK BILLINGHAM CLEVELAND TS23 1LB</p>				<p>TITLE: Optional Mounting Flange</p>	
 <p>THIS DRAWING IS A PRIVATE AND CONFIDENTIAL COMMUNICATION AND THE PROPERTY OF JOHNSON MATTHEY PLC. IT MUST NOT BE COPIED OR LOANED WITHOUT THE CONSENT OF JOHNSON MATTHEY PLC AND MUST BE RETURNED.</p>	<p>UNLESS STATED OTHERWISE TOLERANCES: LINEAR ± 0.2 mm ANGULAR ± 0.5° MACHINED SURFACES </p>	<p>FIRST ANGLE PROJECTION  SCALE 1:5</p>	<p>IF IN DOUBT ASK. DO NOT SCALE REMOVE ALL BURRS & SHARP EDGES PARTS TO BE FREE FROM CUTTINGS AND OIL UNLESS STATED OTHERWISE: ALL DIMENSIONS IN MILLIMETERS ALL THREADS TO BS 3643-2:2007 COARSE PITCH ALL SHARP INTERNAL CONERS R0.4MAX</p>	<p>MATERIAL: WEIGHT: DRAWING NUMBER: DD37808</p>	<p>MODEL REVISION A</p>

EX Product
Schedule Drawing

No modifications permitted
without reference to
Notified Body